

Parts of a Tulip Flower

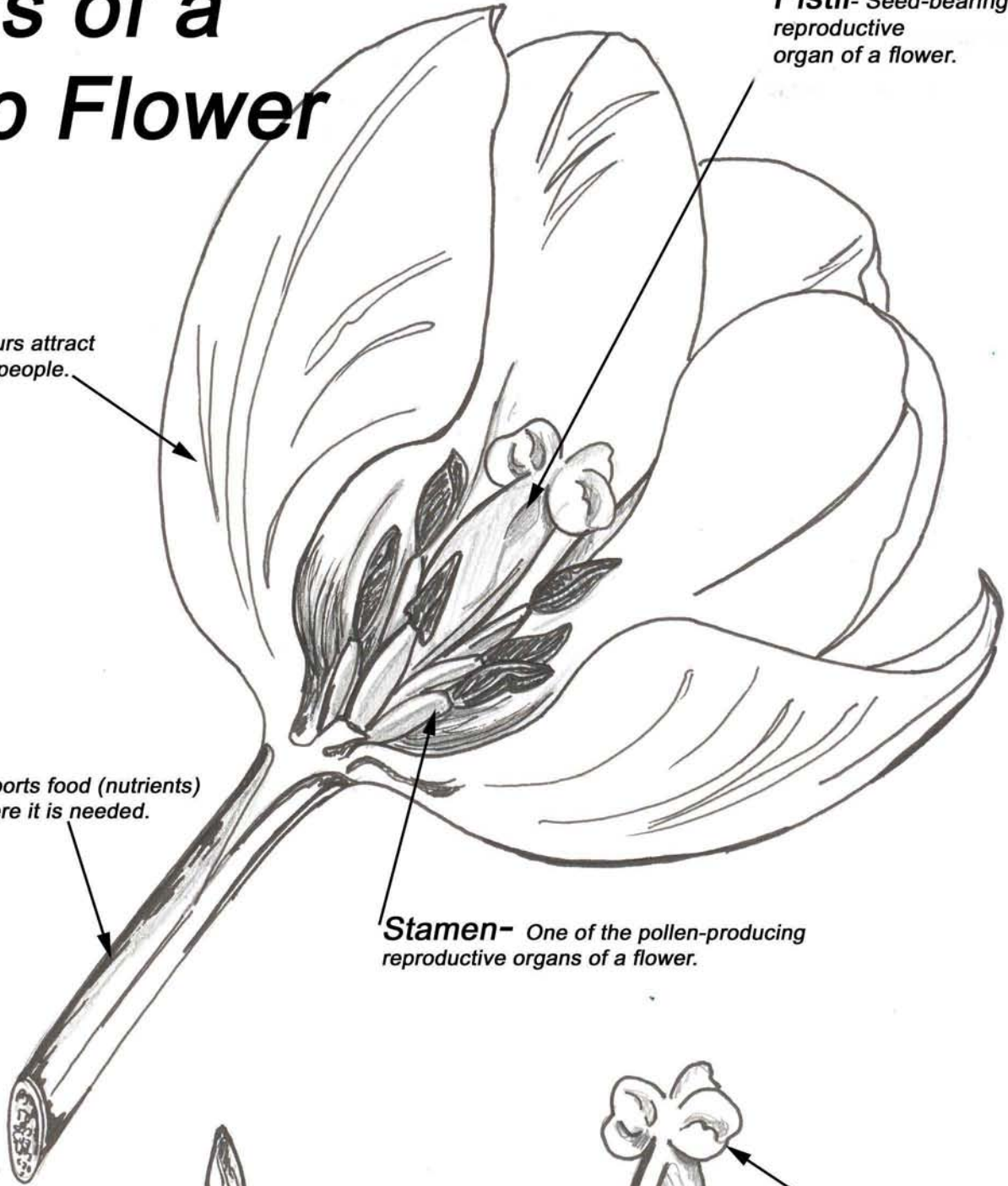
Name: _____

Pistil- Seed-bearing female reproductive organ of a flower.

Petal - Colours attract pollinators and people.

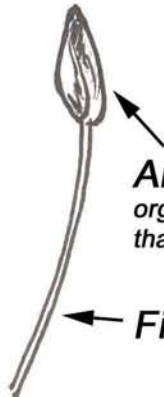
Stem- Transports food (nutrients) from bulb to where it is needed.

Stamen- One of the pollen-producing reproductive organs of a flower.



Anther- The pollen-bearing organ at the end of a stamen that secretes pollen.

Filament

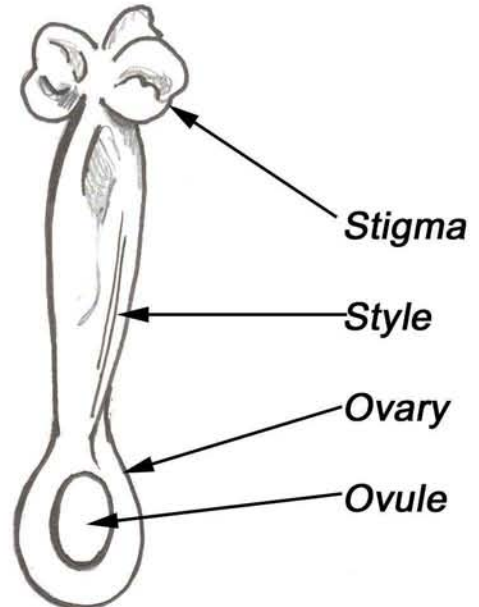


Stigma

Style

Ovary

Ovule



Parts of a Tulip Flower



Petal
Stem
Anther
Stigma
Ovule
Ovary
Style
Pistil
Stamen
Filament

